

HOW TO: SBACKUP

BACKING UP FILES & FOLDERS FROM YOUR LINUX COMPUTER THE IOMEGA® STORCENTER™ NAS DEVICE



SITUATION: I'm running Ubuntu on my computer and I want to use SBackup to back up my computer's files and folders to my Iomega StorCenter NAS device.

INSTALLING SBACKUP AND SETTING UP BACKUPS

You can back up files and folders to your Iomega NAS StorCenter device using SBackup. It is easy to install and set up on Ubuntu.

INSTALL SBACKUP

To install SBackup, open a terminal window in Ubuntu and at the terminal line prompt, type:

```
sudo apt-get -y install sbackup smbfs.
```

This installs the SBackup program.

MOUNT STORAGE SHARES

First, create a directory to which you will mount a storage share (for example, /net). Next, mount the storage share to that directory by going to the terminal line prompt, opening a text editor (such as gedit), and modifying the /etc/fstab file. In the fstab file, enter a line similar to the following:

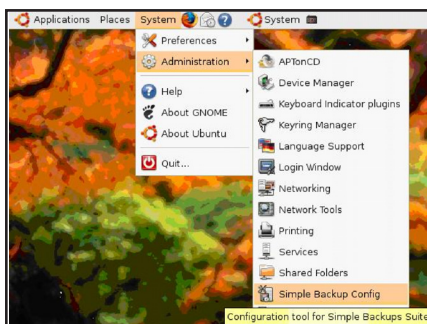
```
//IomegaStorCenter/public /net cifs rw, noperm, password= 0 0
```

where IomegaStorCenter is the name of your Iomega NAS device, public is the share on the NAS device, /net is the directory where the share will be mounted, cifs is the type of share, rw means read/write, noperm means no special permissions, password= means there is no password for the share. Save the /etc/fstab file.

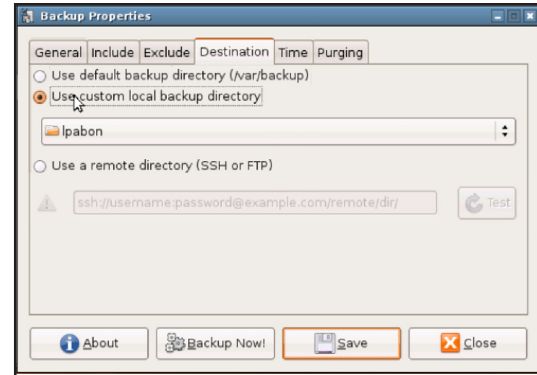
SET UP A BACKUP PLAN

Now it's time to set up the backup plan on your computer. A backup plan includes the files and folders on your computer that you are backing up and the times you want to start a backup. For example, you might want to back up your entire computer every Friday at 5 p.m. You would specify this in your backup plan.

In Ubuntu, click **System > Administration > Simple Backup Config**.



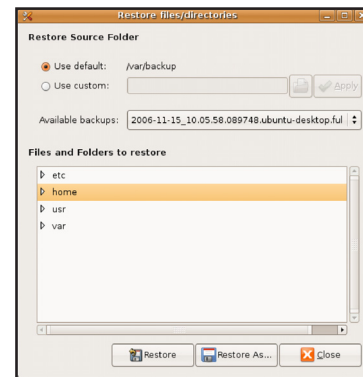
In the Backup Properties dialog box, click the **Destination** tab and select **Use custom local backup directory**.



Navigate to the share directory you set up earlier, for example, /net. This directory displays all the files and folders on your Iomega StorCenter NAS device. Create a backup folder in this directory. You can do other kinds of configuration in this dialog box, including specifying when the backups should occur. Click **Save** to save your configuration.

RESTORING YOUR FILES

In Ubuntu, click **System > Administration > Simple Backup Restore**.



Select a restore source folder and then a backup inside that folder and then click **Restore**.

The Iomega StorCenter family of NAS storage solutions blends award-winning EMC® storage and security technologies with easy-to-use configuration and management tools purpose-built for small businesses and remote offices. Learn more about Iomega NAS solutions at www.iomega.com/NAS.