

## HOW TO: SNMP

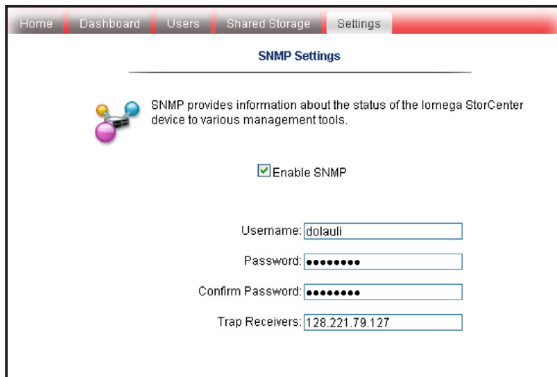
### MONITOR THE IOMEGA® STORCENTER™ NAS DEVICE ON YOUR NETWORK



**SITUATION:** I have EMC® Smarts as a management system and I want to manage my Iomega StorCenter NAS device and other devices on my network.

#### CONFIGURE SNMP & MANAGE YOUR STORCENTER DEVICE

You can enable SNMP on your Iomega StorCenter NAS device and then use a management system such as EMC Smarts to monitor your device. To enable SNMP on your Iomega StorCenter NAS device, open the StorCenter manager, navigate to the **Settings** tab, and click **Media Services > Network Services > SNMP**. On the SNMP Settings page, check **Enable SNMP**. In the fields that display, enter the username and password of your SNMP agent and the IP address of your Trap Receivers that are running the SNMP management application. Click **Apply** to save your changes.



#### SUPPORTED MIBs

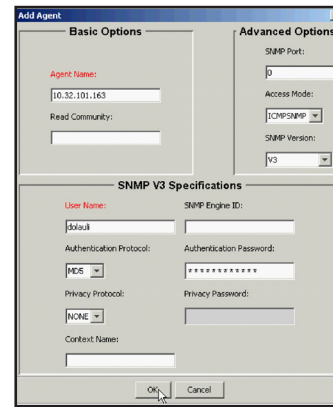
The SOHO MIB definition is included in the CD containing the StorCenter Manager software. You can also access the SOHO MIB from the online help. The following MIBs have been implemented for the StorCenter Manager software:

- 1.3.6.1.4.1.1139.10 (sub-tree for SOHO MIB)
- .iso.org.dod.internet.mgmt.mib-2.system
- .iso.org.dod.internet.mgmt.mib-2.interfaces
- .iso.org.dod.internet.mgmt.mib-2.snmp
- .iso.org.dod.internet.mgmt.mib-2.host

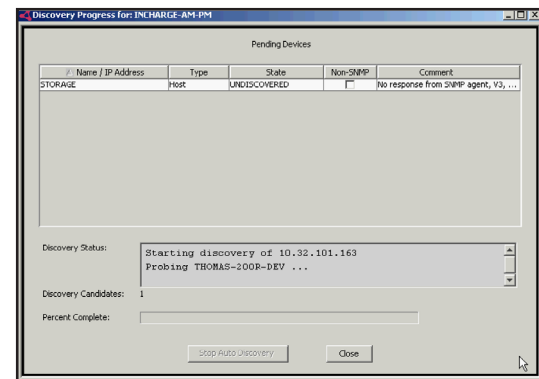
#### MONITOR THE DEVICE WITH EMC SMARTS

To monitor your Iomega StorCenter NAS device, you need to add it to EMC Smarts. Open EMC Smarts and click **Topology > Add Agent**. In the Add Agent dialog box, enter your Iomega StorCenter NAS device's IP address in the Agent Name field. Check **Advanced Options**. Select V3 for

**SNMP Version**. Select MD5 for **Authentication Protocol**. Enter the username and password you used for the SNMP Settings page when you configured your StorCenter Manager and click **OK**.



EMC Smarts begins to monitor your Iomega StorCenter NAS device. The Discovery dialog box shows your Iomega StorCenter NAS device being monitored by EMC Smarts.



The setup and configuration with EMC Smarts is complete. You have successfully added your device to EMC Smarts, and it can now be monitored.

The Iomega StorCenter family of NAS storage solutions blends award-winning EMC storage and security technologies with easy-to-use configuration and management tools purpose-built for small businesses and remote offices. Learn more about Iomega NAS solutions at [www.iomega.com/NAS](http://www.iomega.com/NAS).