

HOW TO: VIDEO SURVEILLANCE

RECORD AND VIEW SURVEILLANCE VIDEO ON YOUR IOMEGA® NAS DEVICE



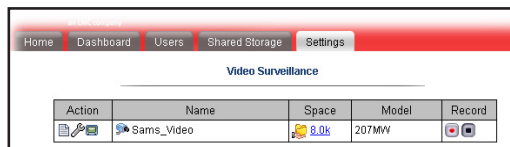
SITUATION: I've been reading and hearing a lot about video surveillance for my small business. I travel frequently, and I would like to be able to record the happenings in my office, and if possible, view them remotely. I don't want to spend a fortune, and it needs to be simple.

RECORD AND SEE VIDEO ON YOUR IOMEGA NAS DEVICE

Your Iomega StorCenter™ NAS device automatically discovers any Axis® video cameras on your network, so you can view live real-time video from any computer on your network. And, using remote access, you can view live video from any web-enabled device anywhere in the world. If you want, you can even record live video and store it on your Iomega NAS device.

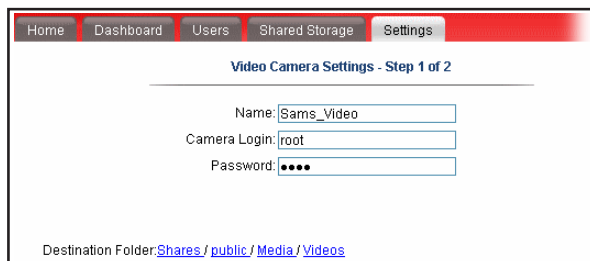
ACCESS YOUR CAMERAS

Your Iomega NAS device discovers your Axis network video cameras automatically. To view your connected video cameras, navigate to the Settings tab and click **Media Services > Video Surveillance**.



CONFIGURE YOUR VIDEO SETTINGS

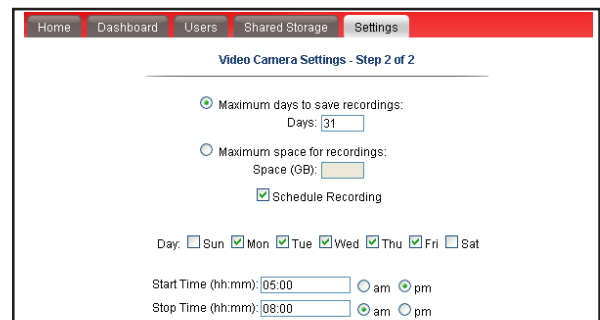
Once your Iomega NAS device discovers your Axis network video camera, you can click to open the Video Camera Settings page. Here you can specify the video folder where recordings will be stored (the default setting is Shares/public/Media), set the camera software's username and password to allow you to stream video to your Iomega StorCenter NAS device, and set a schedule for recordings. For example, you can configure your video camera to record while you are away from your home office.



RECORD VIDEO

To record live video on your Iomega NAS device, click the record button next to the camera. To stop recording, click the stop recording button next to the camera. For added convenience, you can schedule the recording. Click to open the Video Camera Settings page. On page 2 of the configuration setup, check the Schedule Recording checkbox. Then check

the days you want to record and enter the start and stop times. For example, if you leave your office at 5 p.m. and return at 8 a.m. the next day, you would check Monday through Friday and enter 5 p.m. for start time and 8 a.m. for stop time. Videos are recorded in 15-minute segments to protect against data loss should you lose network connectivity.



VIEW LIVE VIDEO LOCALLY AND REMOTELY

To see live video through your camera, click next to the camera on the Video Surveillance page. If you have enabled Remote Access, you can view your live video through any web-enabled device, including a hand-held device like your iPhone. So if you're on a business trip in Asia and you want to check on your son in Denver, you can grab your mobile device, log in to your Iomega NAS device and watch him sleeping peacefully in his crib.



The Iomega StorCenter family of NAS storage solutions blends award-winning EMC® storage and security technologies with easy-to-use configuration and management tools purpose-built for small businesses and remote offices. Learn more about Iomega NAS solutions at www.iomega.com/NAS.