

HOW TO: DIGITAL PHOTOS

ADD DIGITAL PHOTOS TO YOUR IOMEGA® NAS DEVICE



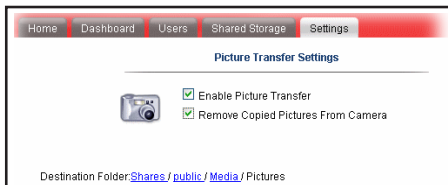
SITUATION: I have a digital camera with hundreds of vacation pictures on it. I just bought an Iomega StorCenter™ NAS device. I want to move my pictures from my camera to my Iomega StorCenter NAS device, so I can free up space on my camera's memory cards.

COPY PICTURES ONTO YOUR IOMEGA NAS DEVICE

Copying pictures from your camera to your Iomega NAS device is so easy, you won't even need a computer. Once picture transfer is enabled, just plug your camera into a USB port on your Iomega StorCenter NAS device. The rest is automatic.

ENABLE PICTURE TRANSFER

To enable picture transfer, open the StorCenter Manager, go to the **Settings** tab, and click **Media Services > Picture Transfer**. Check the **Enable Picture Transfer** checkbox. The default folder for pictures is Shares/public/Media, but you can change it to any folder you'd like. If you change the picture folder, be sure the newly selected folder is connected to your computer by accessing the **Shared Storage** tab. You will know it's connected when the pushpin next to the folder is pointed in. That's it! The folder is ready for pictures.



AUTOMATICALLY DELETING PICTURES FROM THE CAMERA

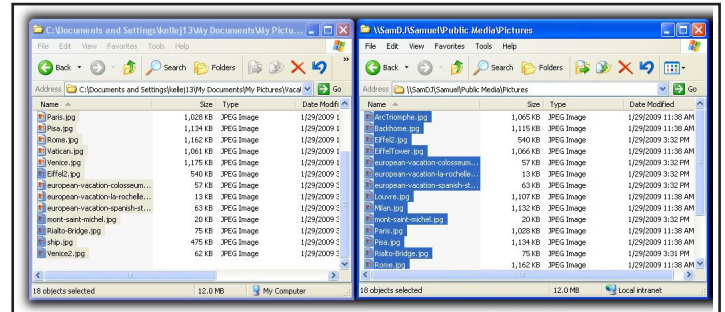
You can automatically delete pictures from your camera after they are transferred, eliminating the hassle of manually deleting your photos. To automatically delete transferred pictures from your camera, open the EMC® LifeLine™ Manager, go to the **Settings** tab, and click **Media Services > Picture Transfer**. Check the **Remove Copied Pictures From Camera** checkbox.

TRANSFER PICTURES FROM YOUR DIGITAL CAMERA

To move your pictures from your camera, connect the camera to your Iomega NAS device with a USB cable. The blue lights on the front of your Iomega NAS device will blink during transfer. That's all there is to it. Your pictures are now saved on your Iomega StorCenter NAS device.

TRANSFER YOUR PICTURES FROM YOUR COMPUTER

To move your pictures from your computer to your Iomega NAS device, open the folder containing your pictures in a Windows Explorer/Mac Finder window. Open your Iomega NAS device picture folder in another Explorer/Finder window. Select all your pictures from your computer and drag (or copy and paste) them to the picture folder on the Iomega NAS device.



PICTURE TRANSFER FROM YOUR CAMERA USING BLUETOOTH

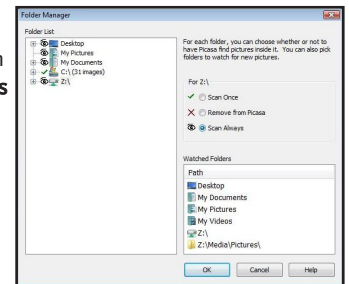
These days, your best candid photos may be on your phone. If you have a USB 2.0 Bluetooth® adapter connected to your NAS device, you can upload photos (and other files) stored on your phone using Bluetooth upload. To enable Bluetooth upload, navigate to the **Settings > Network Services > Bluetooth Settings** page, check the **Enable Bluetooth Transfer** checkbox, and set a folder to store your uploaded files. If you choose to set your Bluetooth upload location to a subfolder of your picture folder, you can be sure all your photos are in the same location. Once enabled, you can upload files from your phone to your Iomega NAS device using Bluetooth.

VIEW YOUR PHOTOS

Once all your photos are on the Iomega NAS device, you can view your photos from any device on your network, including iPhones and game consoles like Playstation® 3 or Xbox 360™. With remote access enabled, you can view pictures stored on your Iomega NAS device from any web-enabled device anywhere in the world.

VIEW YOUR PICTURES WITH PICASA

If you use Google's Picasa to view your photos, you can have Picasa discover photos on your Iomega NAS device. On your computer, open Picasa, go to **Tools > Folder Manager**. In Folder Manager, select the connected folder for your Iomega NAS device, for example, Z:\, and then select **Scan Always**. An eyeball displays next to the connected folder, which means Picasa will look for new pictures on the device.



The Iomega StorCenter family of NAS storage solutions blends award-winning EMC storage and security technologies with easy-to-use configuration and management tools purpose-built for small businesses and remote offices. Learn more about Iomega NAS solutions at www.iomega.com/NAS.