

DataSafe™



iomega® DataSafe™ NAS — Network Attached Storage

Installation and Configuration Guide



©2001 Iomega® Corporation. All Rights Reserved. Iomega is a registered trademarks of Iomega Corporation. DataSafe™ and QuikSync™ are trademarks of Iomega Corporation. Other product, company names and logos are trademarks or registered trademarks of their respective owners.
Part Number: 000001562

**Technical Support is available at 1-888-4-IOMEGA (1-888-446-6342) and at
www.iomega.com/support/nav_techemail.html**

DataSafe NAS

Table of Contents

About This Guide	i
Who Should Use This Guide	i
Box Contents	i
Overview	i
System Information	ii
Typographical Conventions	ii
Related Documents	ii
1 Pre-Installation Planning	1
Equipment Required for Installation	1
Site Planning	1
Familiarizing Yourself with Your DataSafe NAS	3
2 Installing the DataSafe NAS	4
Connect DataSafe NAS to Your Network	4
Turning on the Power	4
Installing DataSafe Wizard Software	5
Completing DataSafe Wizard Installation	6
3 Configuring Your DataSafe NAS	9
First Login	9
Network Setup	10
Setting Time & Date	13
Notes for Advanced Users	15
System Reboot	15
Index	17



About This Guide

Who Should Use This Guide

This DataSafe™ NAS Installation and Configuration Guide is intended to help setup and configure DataSafe NAS. It assumes that you are somewhat familiar with networking and system administration basics. Should you encounter any difficulties during the installation and configuration process outlined in this guide, please refer to the DataSafe NAS User's Manual also found on the DataSafe NAS CD.

Box Contents

- DataSafe NAS file server
- Quick Install Guide
- DataSafe NAS End User License Agreement
- Power Cord
- CAT-5 Ethernet Cables (2)
- Mounting ears (pre-installed)
- Rubber feet (4)
- DataSafe NAS CD containing:
 - DataSafe Wizard for Setup and Discovery
 - DataSafe NAS documentation
- Iomega QuikSync™ automatic client backup software CD

Overview

Your DataSafe NAS comes ready to install with all the required software. It works in a 10/100 Mbps Ethernet network (or Gigabit Ethernet network when so equipped), and is administered using an Internet Explorer web browser. It includes DataSafe Wizard, Iomega's software utility that helps you locate the unit on your network, configure DataSafe NAS network settings, and launch the web user interface.

System Information

Please record the following information from the label on the side panel:



- Model Number: _____
- Serial Number: _____
- Assembly Number: _____

These numbers will be needed by support personnel if you should contact them.

Typographical Conventions

The following typographical conventions are used in this guide to help you locate and identify information:

Table 1-1. Typographical Conventions

Item	Symbol	Description
Italic text		is used for emphasis and book titles.
Bold text		identifies menu names, menu options, items you can click on the screen, and keyboard keys.
Courier font		identifies file names, folder names, and text that either appears on the screen or that you are required to type in.
NOTE:		Notes provide extra information, tips, and hints regarding the topic.
CAUTION:		Cautions identify important information about actions that could result in damage to or loss of data or could cause the system to behave in unexpected ways.
WARNING:		Warnings identify critical information about actions that could result in unexpected equipment failure, loss of critical operating system files or potential bodily injury.

Related Documents

Following is a list of related publications for background and additional information:

- DataSafe NAS User's Manual
- Quick Install Guide
- DataSafe NAS End User License Agreement (EULA)
- Warranty Statement
- Also see our Web site at: <http://www.iomega.com> for latest Release Notes.



1 Pre-Installation Planning

Equipment Required for Installation

To connect, install and administer your DataSafe NAS, you will need an available 10/100 Ethernet network hub or switch. It will be necessary for your workstation to have the following capabilities:

- Windows 95/98/Me/NT (SP5)/2000
- Internet Explorer v4.01 SP1 or newer - support for Netscape is not currently available.
- Client for Microsoft Networks enabled over TCP/IP.
- Network Interface Card (NIC)
- CD-ROM Drive

Site Planning

When planning a site to house your DataSafe NAS, you will want to consider requirements for power and network availability, as well as a space with well regulated temperature and humidity that is relatively free of dust and other air-borne contaminants. If your installation calls for placement on a table top, apply the enclosed rubber feet to the bottom of the chassis.

The following tables are designed to help you plan your DataSafe NAS installation.

Table 1-1. Size & Weight

Item	Quantity
Weight	27 pounds (12.3 kg)
Size	17 x 20 x 1.75 (43.2 x 50.8 x 4.5 cm)



CAUTION: When placing your DataSafe NAS in rack mount mode, make sure you maintain proper mechanical load leveling to avoid a hazardous condition.

Table 1-2. Electrical Requirements

Item	Quantity
Voltage Range	95 ~ 135 VAC or 180 ~ 265 VAC
Frequency	47 ~ 63 Hz



WARNING

Make sure your site has the necessary capacity to handle your DataSafe NAS unit(s). Overloading electrical supply circuits is extremely hazardous. Care should also be taken to properly ground all rack mounted equipment.

Table 1-3. Operating Environment Requirements

Item	Quantity
Temperature - Operating	41° to 104° F (5°C to 40° C)
Temperature - Non-Operating	external operating temperature range -4° to 140° F (-20°C to +60°C)
Humidity - Operating	5% to 85% humidity non-condensing
Humidity - Non-Operating	5% to 95% humidity non-condensing



CAUTION:

When mounting your DataSafe NAS in a rack system, make sure that the air vents do not become blocked. Also, care must be taken to insure that DataSafe NAS is installed in an environment compatible with the ambient temperatures stated in the table above. Maximum of 40° C.

Familiarizing Yourself with Your DataSafe NAS

Front Panel

The DataSafe NAS front panel has four LEDs. Three are grouped together on the right side, one on the left. The LEDs indicate the following:

- Far left LED (soft power switch). Solid LED indicates power on. This LED will blink during boot-up, and will also blink to indicate error conditions (See DataSafe NAS User's Manual for alert codes).
- Network Link 1 for LAN 1. Flashing indicates network activity.
- Network Link 2 for LAN 2. Flashing indicates network activity.
- Hard disk drive LED indicates read/write activity.



Figure 1-1. LEDs

Back Panel

Each Ethernet Port has two LEDs. One indicates link and the other activity.

NOTE: On units with a Gigabit Ethernet option installed, additional LEDs will be present.

(BACK PANEL)

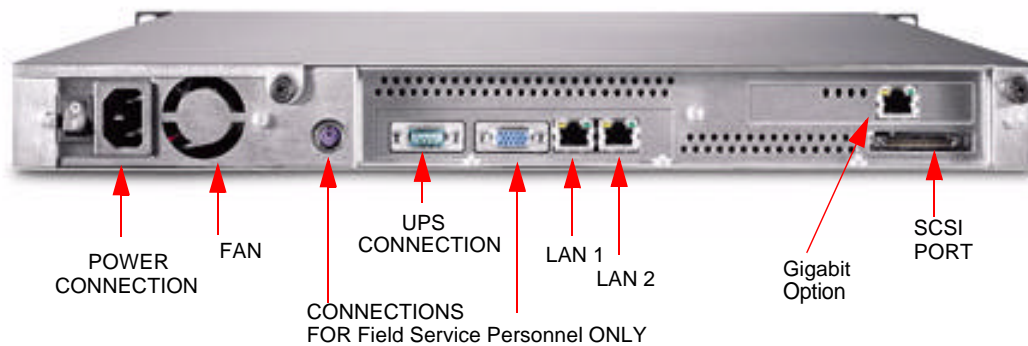


Figure 1-2. NIC connections, Back Panel



2 Installing the DataSafe NAS

Connect DataSafe NAS to Your Network

To connect the DataSafe NAS to your network, insert one of the included Ethernet cables into either DataSafe NAS 10/100 Ethernet port (LAN1 or LAN2), located on the rear panel. Insert the other end of this cable into network hub or switch. If your DataSafe NAS is equipped with a Gigabit Ethernet option, you may connect it to a 10/100/1000 network hub or switch, using a CAT-6 cable (not supplied).

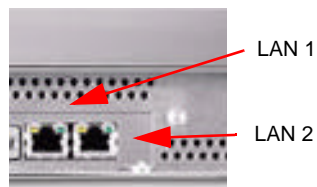


Figure 2-1.

NOTE: The two 10/100 Ethernet ports found on DataSafe NAS are pre-configured to provide load balancing and fail-over capability. Although not necessary for a successful installation, this feature does enhance system performance, and allows for redundancy in the event of a cable or component failure. To use this function, connect the second included Ethernet cable to your DataSafe NAS and the other end to another open port on your network hub or switch. Load balancing and fail-over will automatically be enabled with no special configuration required for your switch.

Turning on the Power

- 1 Connect one end of the enclosed power cord to a power source. Plug the other end into the power receptacle on the back panel shown in Figure 2-1 below.

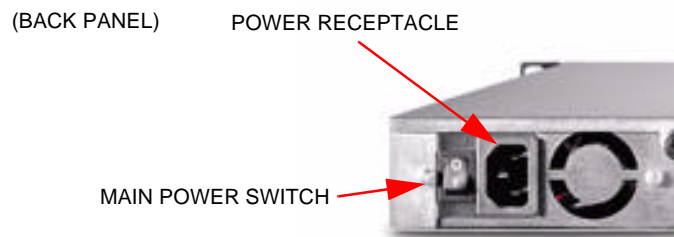


Figure 2-2. Power Receptacle and Main Power Switch, Back Panel

- 2 Toggle the main power switch on the back panel to the “ON” position (I).
- 3 Press the soft power switch on the front panel (shown below), to turn on the unit.

(FRONT PANEL)

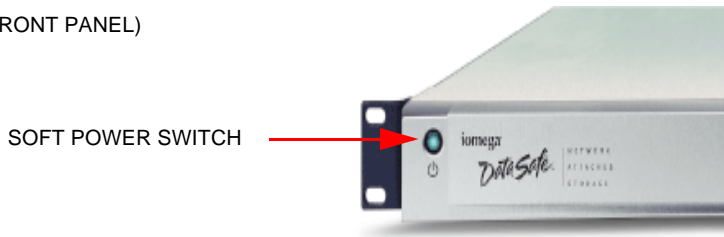


Figure 2-3. Soft Power Switch, Front Panel

The LED in the power switch will come on. After a few moments it will begin blinking, and continue to blink for several minutes during the power-up cycle. When the power light stops blinking and disk activity stops, your DataSafe NAS is ready to configure.

Installing DataSafe Wizard Software

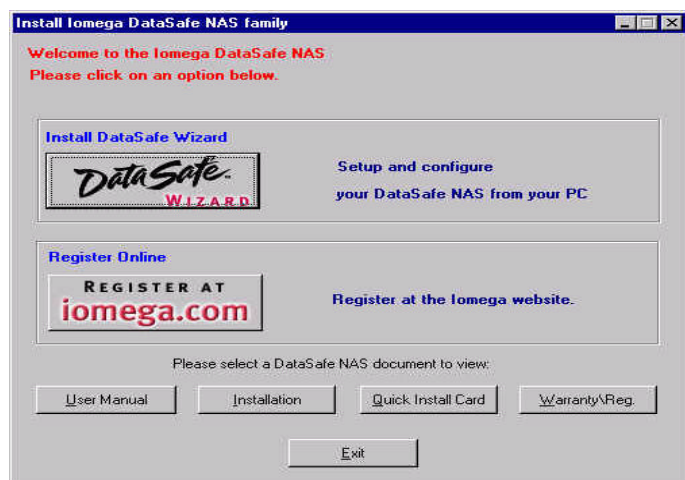
Use a workstation that is logged onto the network where the DataSafe NAS unit is connected. Insert the DataSafe NAS Installation and Documentation CD into your CD-ROM drive. If the “Welcome to the DataSafe NAS” screen does not appear, the auto-insert notification for the CD has been turned off. In this case, use Windows Explorer to launch the setup program from the CD.

Click on DataSafe Wizard for Setup & Discovery to begin your installation.

DataSafe Wizard

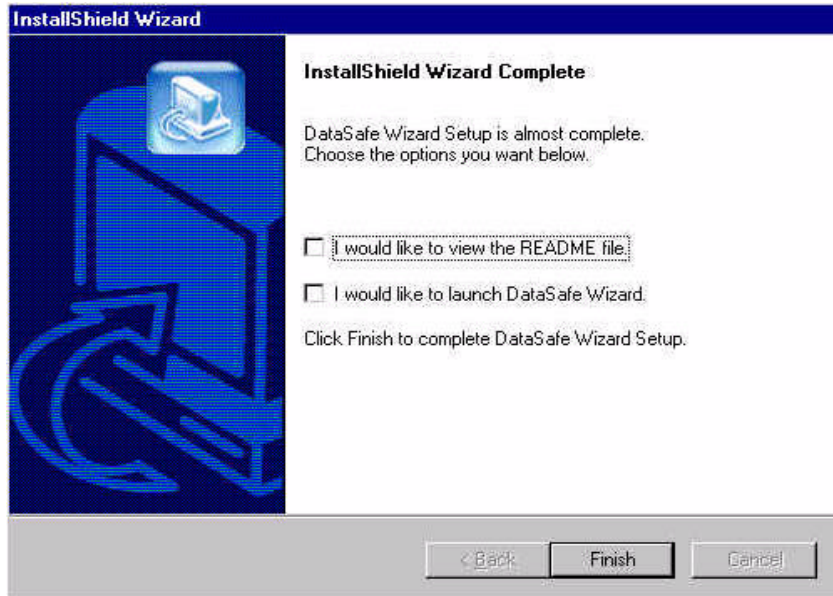
When the Install DataSafe NAS Family screen appears, click the Install DataSafe Wizard button. The wizard will guide you through the installation process.

If you have an older version of DataSafe Wizard on your server, you will be notified and asked if you want to un-install the older version, before your newer version is installed.



Completing DataSafe Wizard Installation

When the Install wizard has completed, you may view the README file by selecting the check box. Or, you may launch DataSafe Wizard by clicking on the check box and then selecting Finish. You may exit the wizard without selecting either option by selecting Finish.

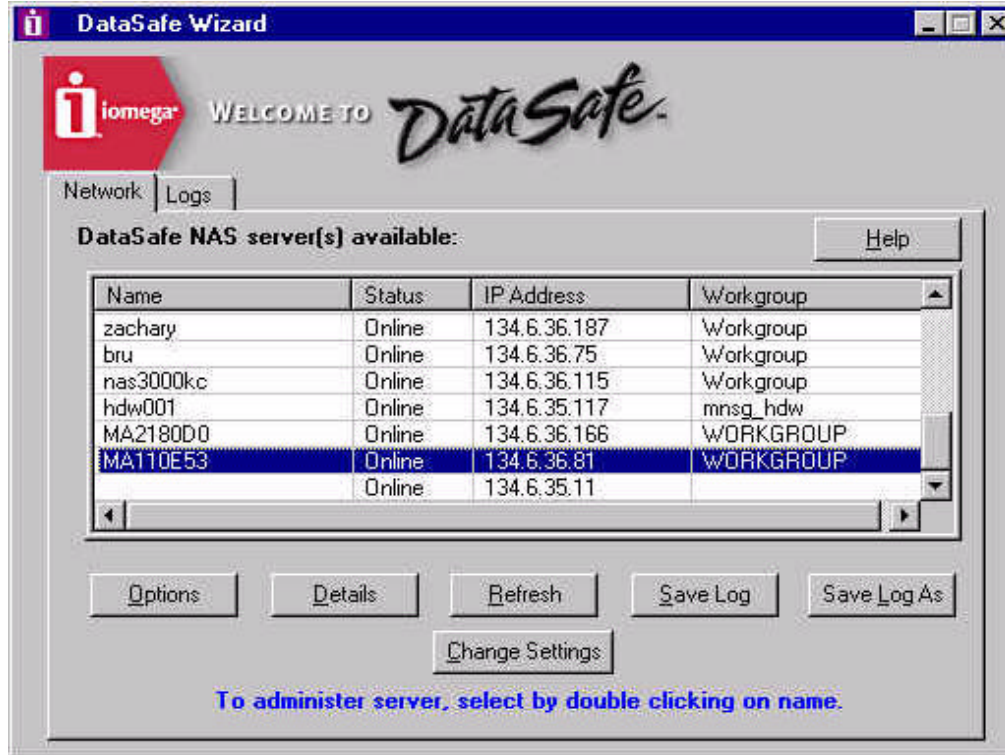


Alternately, you may click on Finish to close the wizard, and then launch DataSafe Wizard from your Windows workstation by selecting Start, Programs, DataSafe Wizard.

DataSafe Wizard will initiate, and begin searching for all DataSafe NAS units on your network.

Finding Your New DataSafe NAS

Once DataSafe Wizard finds all of the DataSafe NAS units on your network, it will display computer Name, Status, IP Address and Workgroup.



If a DHCP server is running in your network, launch the DataSafe NAS configuration screens by double-clicking on the default name of your newly installed DataSafe NAS and skip to Chapter 3.



CAUTION: You are reminded that currently, there is no Netscape browser support. If you are using Netscape as your default browser, you will have to re-set Internet Explorer as your default browser before beginning this installation.

Modifying Default Network Settings for non-DHCP Service

If DataSafe NAS is attached to a network without a DHCP server, your DataSafe NAS will be displayed with an IP Address in the 169.254.xxx.xxx range. You must now assign a unique “Static IP Address” to your unit. See your network administrator for an available IP address before proceeding.

To set an IP address, highlight the default name of your DataSafe NAS with a single mouse click and then select the Change Settings button. You will receive a warning message about making changes - click OK. Delete the default IP Address and enter your unique address, subnet mask, and gateway (if applicable). Should you wish to change the default computer name DataSafe NAS Server Name, please do so now with any combination of alpha-numeric characters (without spaces).

Then change the DHCP Client setting by clicking the down arrow and highlighting Disabled.

Next, click Apply to make the changes permanent. Your DataSafe NAS will now automatically reboot.

End this procedure by selecting the Close button.

After your DataSafe NAS has rebooted, press the Refresh button in the main DataSafe Wizard window. When the search is complete, your new settings should appear. If not, go back to the top of this page, and begin again.

Now, double click on the DataSafe NAS in the DataSafe Wizard window to launch the configuration screens on your newly enabled DataSafe NAS.

The screenshot shows a configuration window for the DataSafe NAS. The settings are as follows:

User Name :	Administrator
IP Address :	169.254.0.0
Net Mask :	255.255.255.0
Gateway :	169.254.0.0
MAC Address :	00:30:48:11:0e:53
DataSafe NAS Server Name :	MA11172A
Workgroup :	WORKGROUP
DHCP Client :	Disabled
DHCP Server :	Enabled
Status :	

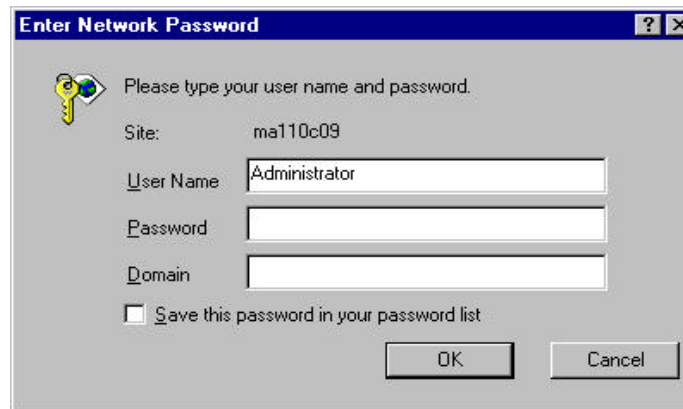
At the bottom of the window, there are two buttons: "Apply" and "Close". A red arrow points to the "Apply" button.



3 Configuring Your DataSafe NAS

First Login

To begin configuring your DataSafe NAS, you must now login by entering `Administrator` into the User Name field. Leave the Password field and Domain field blank and click OK.



Your Internet Explorer browser will launch and display the HTTP Shares window. Click on Administer this Server



You will be prompted for a second login to gain access to the administration Home Page. Again, enter `Administrator` in the User Name field and leave the Password field blank.

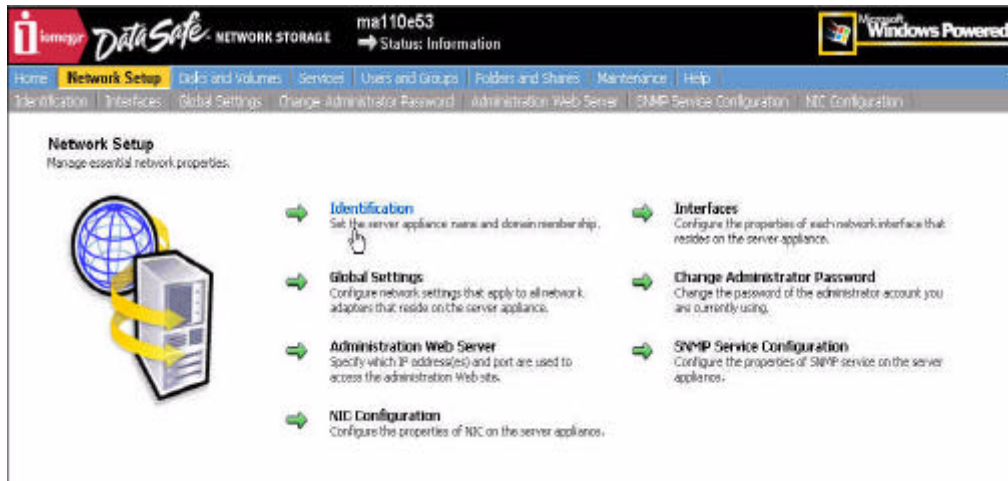
You are now ready to make changes to factory default settings to meet your particular network, security and time-zone requirements.

Network Setup

To begin these modifications, select Network Setup.

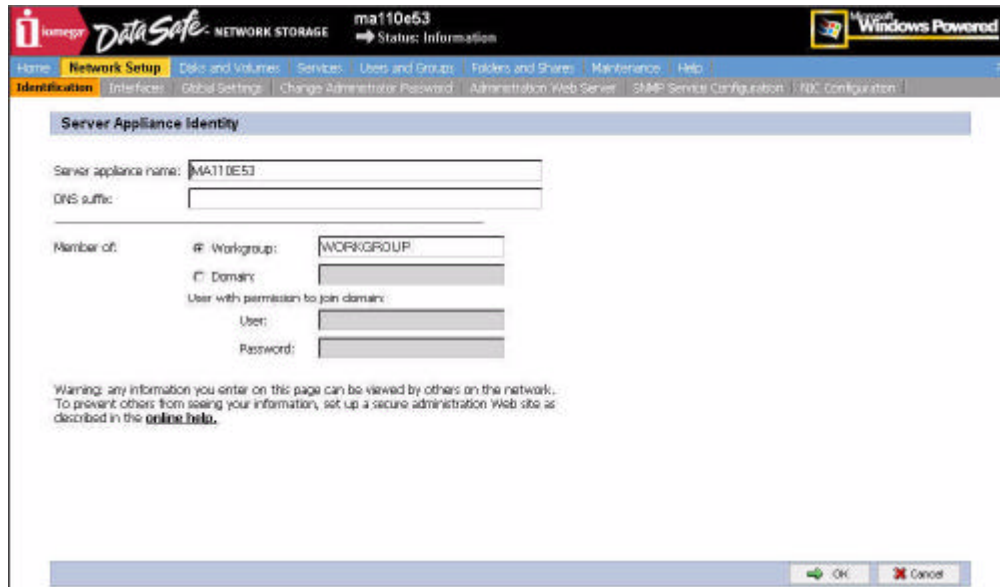


Then select Identification



Changing the Server Name

When changing the name of your DataSafe NAS, you may use any combination of alpha-numeric characters (without spaces).



The screenshot shows the 'Server Appliance Identity' configuration page in the DataSafe Network Storage web interface. The page title is 'ma110e53 Status: Information'. The navigation menu includes 'Home', 'Network Setup', 'Disk and Volumes', 'Services', 'Users and Groups', 'Folders and Shares', 'Maintenance', and 'Help'. The 'Identification' section is active, with sub-links for 'Interfaces', 'Global Settings', 'Change Administrator Password', 'Administration Web Server', 'SMTP Service Configuration', and 'FQDN Configuration'. The 'Server Appliance Identity' section contains the following fields:

- Server appliance name: MATT0E53
- DNS suffix: (empty)
- Member of: Workgroup: WORKGROUP
- Domain
- User with permission to join domain: (empty)
- User: (empty)
- Password: (empty)

A warning message states: 'Warning: any information you enter on this page can be viewed by others on the network. To prevent others from seeing your information, set up a secure administration Web site as described in the [online help](#).' At the bottom right, there are 'OK' and 'Cancel' buttons.

Delete the default server name in the Server Appliance Name field. Enter a new server name. In the DNS suffix field, enter your Fully Qualified Domain Name (FQDN) if applicable.

You may now change the Workgroup or join an existing Domain on your network. When joining an existing Domain, the proper entry for this field is: DomainName\Administrator. The User and Password fields are those required for the Domain you are joining.

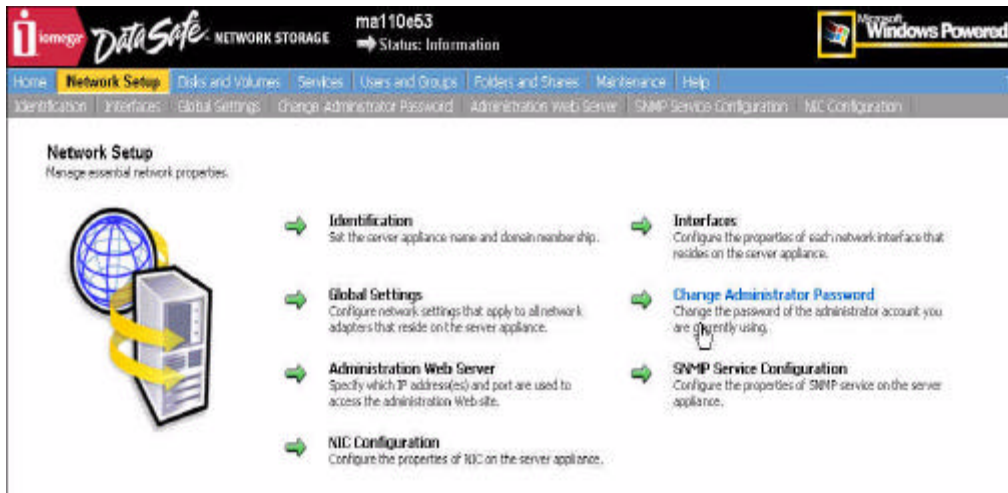
Next, click on the OK button in the lower right hand corner.

You will be prompted to reboot the system to make the changes permanent. Select Cancel for now, as you will be instructed to reboot the system later, after further modifications have been made.

This will return you to the Network Setup window.

Changing the Administrator Password

To change the Administrator Password; from the Network Setup window, select Change Administrator Password.



Then change the password, by clicking in the New Password field. Enter your new password and confirm by re-entering the same password, in the Confirm New Password field.



Click OK at the bottom right hand corner of the screen to apply the change. You will be returned to the Network Setup window.

NOTE: Since you changed your Administrator Password, you will now be prompted to Login again. To continue this session in the web UI, type your new password in the Password field.

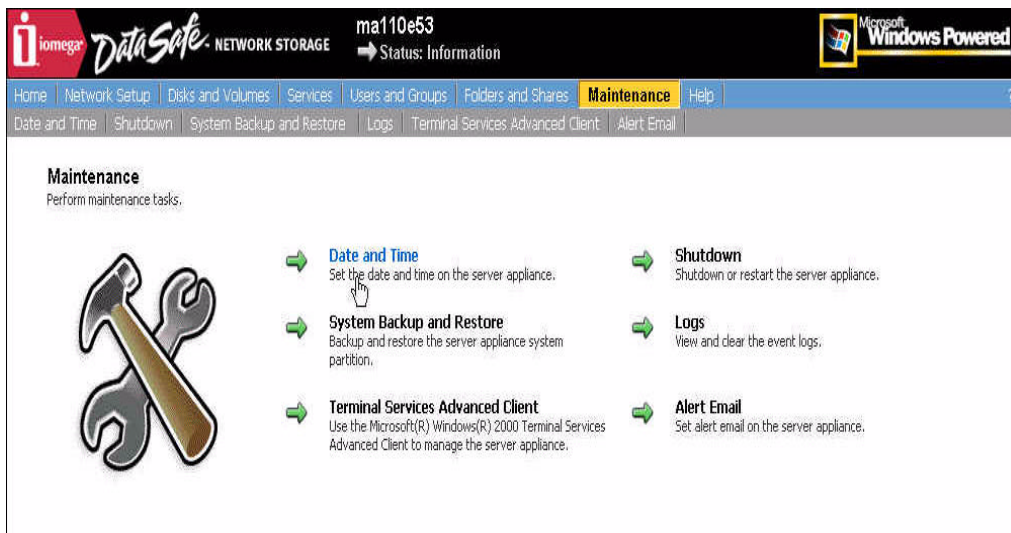


CAUTION: If you change the user name and password, be certain that you keep an appropriate record of the change. If you forget and cannot locate the new user name and password, neither you nor Iomega Technical Support will be able to administer your DataSafe NAS.

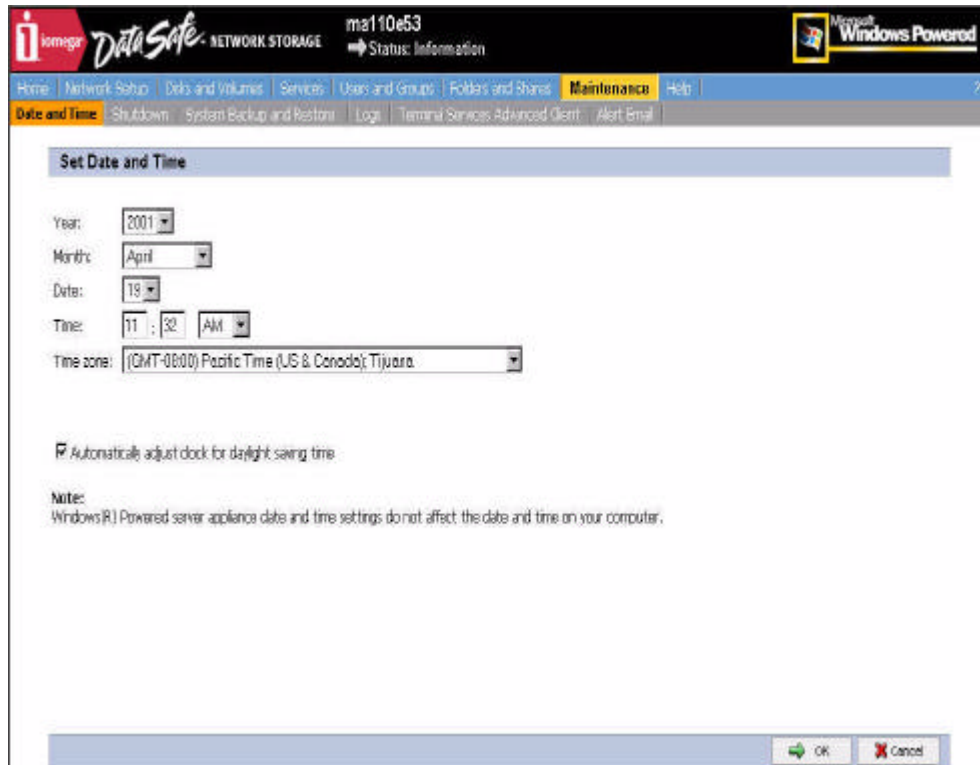
Setting Time & Date

The last step is to set the date, time and time-zone for your DataSafe NAS. Select Maintenance from the blue navigation bar at the top of the web UI.

Next, select Date and Time.



Enter the correct year, month, date, time and time-zone by clicking on the down arrow button in each field and highlighting the appropriate entry.



NOTE: Even if the correct date and time are displayed, you must verify this by clicking OK.

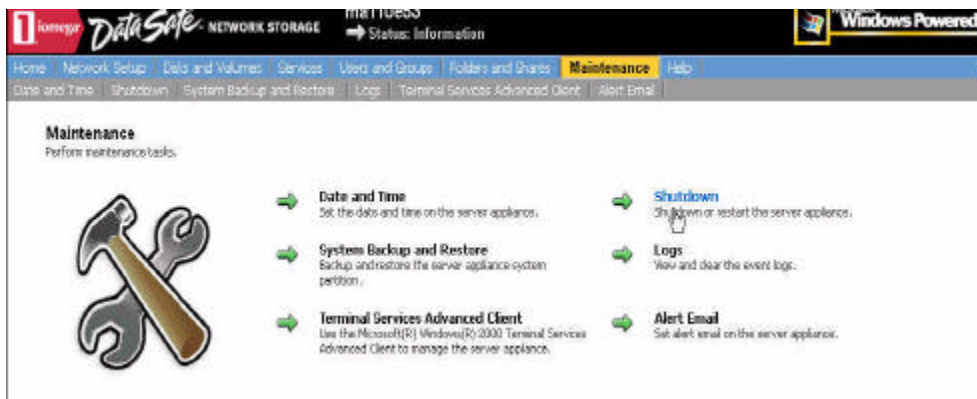
Notes for Advanced Users

Your DataSafe NAS is pre-configured in RAID5, and it is recommended that you maintain this default configuration. However, if you prefer using a different drive configuration such JBOD or RAID 1, it is recommended you make this change prior to beginning normal operations. If you later decide to change the drive configuration, the drive will be reformatted and all data will be erased.

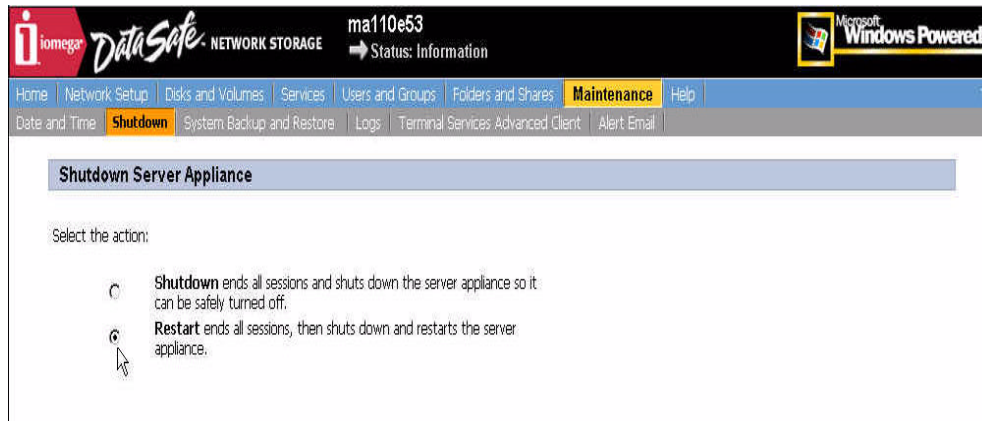
For more information on changing drive configurations, consult the DataSafe NAS User's Manual.

System Reboot

Once you have completed your changes, you must reboot your DataSafe NAS for those changes to take effect. In the Maintenance screen, select Shutdown.



Then in the Shutdown window, select the Reboot radio button. Then select OK.



You will be prompted to confirm Reboot, select OK. Your DataSafe NAS will now reboot.

You must now close your browser session.

Once rebooted your DataSafe NAS is now ready for use. You may begin sharing files using the default “Public” share folder located through Network Neighborhood, or create additional shares by following the instructions in the User’s Manual. For further information on modifying or configuring other areas of your DataSafe NAS unit, see the DataSafe NAS User’s Manual provided on the CD.

Normal Power-Down

To power-down your DataSafe NAS under normal conditions, you may use the web interface, by selecting Maintenance on the menu bar, and then Shutdown, or you may use the soft power switch on the front panel

After shutdown, to terminate power to all integrated components of DataSafe NAS, switch off the main power switch on the back panel.



Index

A

Administrator password
changing 12

B

Back panel 3
Backup software CD i

C

Configuring your DataSafe NAS 9
Connection to network 4

D

DataSafe NAS
 configuring 9
 finding on network 7
DataSafe Wizard i
DataSafe Wizard software
 installing 5

Date

setting 13

Date and time

setting 13

Default network settings
 modifying 8

DHCP server 7
 network without 8

DNS suffix 11

Domain 9, 11

E

Ethernet cables i
Ethernet network i
Ethernet network hub 1
Ethernet ports 4

F

Fail-over 4
Fan 3

Files

sharing 16

Front panel 3

G

Gigabit Ethernet network i
Gigabit Ethernet option 3, 4

H

Hard disk drive LED 3
Hardware requirements 1

Home page 9

HTTP Shares 9

Humidity 1

I

Identification 10
Installation environment 1
Installation planning 1
Installing the DataSafe NAS 4
Internet Explorer 1

J

JBOD 15

L

LEDs 3
Load balancing 4
Login 9

M

Main power switch 4
Main switch 3

N

Name
 changing 11

Netscape 1

Netscape browser support 7

Network activity indicator 3

Network connection 4

Network hub 4

Network interface card 1

Network setup 10

O

Operating environment requirements 2

P

Password 9, 11
 changing 12

Power

 turning on 4

Power connection 3

Power on indicator 3

Power-down 16

R

RAID5 15

Rebooting system 15

Release notes ii

S

SCSI port 3

Server appliance name 11

Server name
 changing 11

Shares

- creating 16
- Sharing files 16
- Shutdown 16
- Site planning 1
- Soft power switch 3, 4, 16
- Software CD i
- Software requirements 1
- System reboot 15
- T
- Table top installation 1
- Temperature 1
- Time and date
 - setting 13
- U
- UPS connection 3
- W
- Web site ii
- Workgroup 11