

# BACKING UP YOUR NETWORK WITH EMC® RETROSPECT® SOFTWARE

Overview	2
Using the Backup Wizard	2
Steps 1 through 6	3
Steps 6 through 11	4



## OVERVIEW

EMC® Retrospect® backup and recovery software was designed for use in small and midsize businesses (SMBs) and distributed enterprises. These environments require fast, reliable data protection, but do not have the extensive IT resources or training required to run traditional, complex backup and recovery software. To solve this problem, EMC offers Retrospect, an easy-to-use application that manages every aspect of computer data backup quickly, efficiently, and safely. Retrospect utilizes innovative technologies to address backup and restore challenges in six critical areas:

- Works in a mixed environment
- Protects Servers, 24x7 Applications, Desktops, and Notebooks
- Easy to Set Up and Manage
- Fast, Reliable, Secure Backups
- Reliable Restores
- Backup to Disk, Tape, or Optical devices

This guide demonstrates how easy it is to back up a network using Retrospect 7.6 for Windows® Multi Server edition, which protects one or more servers and an unlimited number of networked desktops and notebooks. For more information about different EMC Retrospect editions, please visit [www.retrospect.com](http://www.retrospect.com).

## SETTING UP A BACKUP STRATEGY TO PROTECT AN ENTIRE NETWORK OF COMPUTERS USING THE BACKUP WIZARD

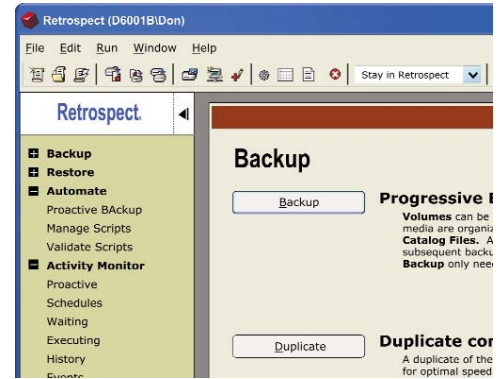
The Backup Wizard makes it easy to set up a backup strategy, whether it is as simple as protecting a single computer or as sophisticated as backing up a network of servers, desktops, and notebooks at a small business or branch office of a larger organization. Follow this demonstration, which assumes that you have already installed the Retrospect server and client software, to see how easy it is to backup a network.

### Step 1

Launch Retrospect® and start the Backup Wizard. The Backup Wizard will walk you through setting up a backup strategy step by step.

### Step 2

Select which computers to back up. The Backup Wizard offers the most common scenarios (my computer, my computer and computers on my network, only computers on my network), or you can specify exactly which you want to back up by selecting “let me choose.”



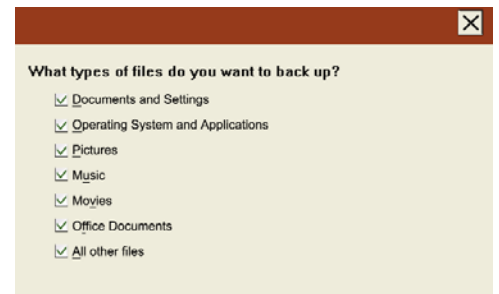
And if you need to add a new computer to the backup queue, it is easy— simply install the client software on that machine, and then select Add Clients in the Backup Wizard “Clients” window. Retrospect will automatically discover all of the client computers on the network. Choose the client computer that you wish to add, and select Add. You will need to enter the password you assigned to the client during the installation of the Retrospect Client software.

### Step 3

Select the kinds of files that you want to back up. The Backup Wizard offers seven different file types that you may include or exclude, or you can create your own advanced selectors.

### Step 4

Select the destination where you want to store your backup. Retrospect can back up to local disk, networked disk such as NAS or a storage array, single-tape drives, autoloaders, large tape libraries, and optical devices.

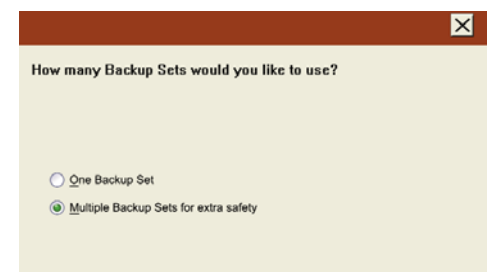


### Step 5

Set a backup schedule. When you set a backup schedule, you are telling Retrospect what days and times it should back up your desktops, laptops, and/or servers. By automating the backups, you are eliminating reliance on human interaction for backups to occur, and you can rest assured that your data is being protected.

### Step 6

Create multiple backup set destinations. The Wizard asks you to choose how many Backup Sets to use, and when to rotate them. To guard against media failure, it is a good idea to use at least two sets: one in-use, and one stored at a safe offsite location. Every week, swap the sets, so that the offsite set contains data no more than a week out of date. You can do this through the Backup Wizard by choosing create “Multiple Backup Sets for extra safety,” and the Wizard will adjust the schedule automatically.



### Step 7

Choose data compression settings.

Retrospect offers the option to compress your backup data. Doing this allows you to fit more data on your backup media, but backups will take slightly longer.

### Step 8

Choose encryption settings.

For added security, Retrospect offers several types of encryption, including government certified AES-256 encryption. If you wish to encrypt your data, simply select the type of encryption that you would like to use, and set a password for your data.

### Step 9

Choose grooming settings.

With scheduled backups, the hard drive eventually becomes full. You can choose to retire the backup drive as an archive, recycle it, add additional disk volumes, or have Retrospect groom out older backups to make room for newer ones.

### Step 10

Give your backup script a name.

It's a good idea to name your backup script something that describes what it does, such as "Nightly Server Backup" or "Marketing Department Backups".

### Step 11

Review your settings.

The Backup Summary dialog shows all of your backup settings, allowing you to verify what computers will be backed up, what types of files will be backed up, where they will be backed up to, and when.

You have now completed scheduling your backups!

