

What is Iomega® v.Clone™ Software and how does it work?

What makes Iomega v.Clone unique? How does v.Clone work? How is creating a clone different from backing up your system? What are the advantages of using v.Clone?



What is Iomega v.Clone?	2
How does v.Clone work?	2
What is a Clone?	3
Is v.Clone backup software?	3
Is v.Clone disaster recovery?	3
Can you have more than one clone?	3
What Files and Folders will be Synchronized Automatically?	3
What are the requirements for using v.Clone?	4
What are the advantages of v.Clone?	5

What is v.Clone?

Iomega® v.Clone™ software is cutting-edge technology developed by EMC utilizing VMware technologies. Iomega v.Clone enables you to create a clone of your PC onto an Iomega hard drive, use the clone on another PC* as if you were working on your primary system, then sync any changes to your key document folders back to your primary PC.

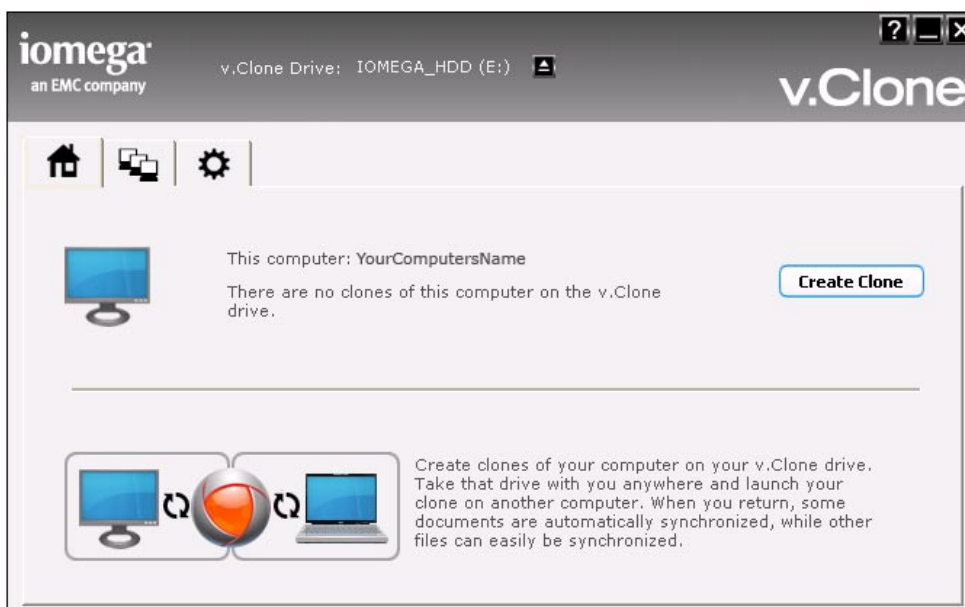
This unique solution lets you take your operating system, files, settings, and applications wherever you take your Iomega hard drive. Plug your Iomega hard drive into an available PC and enjoy using all your applications, including office software, email programs, and browser favorites. Easily access, edit, and save files to your Iomega hard drive. No data is left behind on the secondary computer, so your files are kept secure. Then, sync all your data back when you return to your primary computer. Take your hard drive with you when you travel without the hassle of packing an entire laptop. For additional security, Iomega v.Clone provides quick access to your PC in case of an emergency or if your primary computer ever crashes.

*You must have Administrator access to the secondary computer. The secondary computer must be capable of running the v.Clone software. v.Clone must run from your Iomega hard drive. v.Clone is not guaranteed to offer the same level of performance as your primary computer.

How does v.Clone work?

Iomega v.Clone creates a virtual image, or clone, of your computer's primary hard drive on an Iomega hard drive**. This clone includes the operating system, all applications (office suite applications, mail client, multimedia applications, etc.), text files, images, videos, and personal settings (browser favorites, wallpaper, etc.). When you plug the Iomega hard drive into a secondary computer (for example, a netbook or another PC), you can run the clone as an application that lets you work just as if you were on your primary PC. Any revisions are saved to the clone on your Iomega hard drive, not on the secondary PC. When you re-attach the Iomega hard drive to your primary PC, files in the key documents folder sync back to the primary PC.

**Allow approximately 2 minutes per gigabyte of data for initial image capture.



What is a Clone?

A clone is a virtual image that contains all of the files, applications, and operating system on your primary hard drive. In essence, a clone is a copy of your primary hard drive.

Is v.Clone backup software?

Although v.Clone provides many backup-like features, it is not backup software and not meant to replace regular backups. v.Clone will copy the entire contents of your hard drive only when a clone is created or during a scheduled clone creation. v.Clone will only sync files contained in the key documents folders. See "What Files and Folders will be Synchronized Automatically?" for more information.

Is v.Clone disaster recovery?

v.Clone is not intended to be a disaster recovery solution. Disaster recovery implies immediate access to your files in case of emergency and includes the ability to restore your entire system. To access your v.Clone image, you must have a computer that runs Windows.

The advantage that v.Clone offers over disaster recovery is the ability to launch your cloned computer from any Windows PC with v.Clone installed. This gives you immediate access to your files in case of an emergency that damages your primary PC. You can also launch or explore old clones and recover files you have inadvertently deleted. In essence, you can use v.Clone to run your Windows PC on another computer in case of disaster, but you can't use v.Clone to restore the operating system, applications, and data files back onto your primary system.

Can you have more than one clone?

You can create multiple clones of a given PC on a single Iomega hard drive. You can also create clones of several different machines as long as space is available. The number of clones you can put on one drive depends on the available capacity on the Iomega hard drive and size of the computer hard drives you want to clone.

What Files and Folders will be Synchronized Automatically?

After initial clone creation, v.Clone will automatically keep the following folders synchronized between the clone and your primary computer:

Windows® 7 / Windows Vista™

- Contacts
- Documents
- Downloads
- Favorites
- Music
- Pictures
- Saved Games
- Videos

Windows XP

- My Documents
- Desktop
- Favorites



What are the requirements for using v.Clone?

- You need a supported NTFS-formatted Iomega hard drive* to use v.Clone. If your Iomega hard drive supports v.Clone, you can download it from www.iomega.com/vclone. You will need to enter the serial number of your Iomega drive.
- The primary computer and any secondary computer you use with v.Clone must be running a supported version of Windows:

Primary Computer (the computer where you create a clone) — 32-bit editions of Windows XP, Windows Vista Ultimate or Enterprise, or Windows 7

Secondary (Host) Computer (the computer where you run a clone) — 32-bit editions of Windows XP, Windows Vista (all versions), or Windows 7

- You must have 1GB RAM or higher on any computer you intend to run v.Clone.

NOTE: 2 GB RAM or more is recommended on computers where you run a clone.

- 1.3 GHz or faster x86-compatible processor with Intel VT or AMD-V technology.

NOTE: You may need to check the specifications of your CPU to verify that it can support virtualization.

- You must have administrator access on any computer where you use v.Clone (generally not available on an Internet café or public computer).
- Iomega v.Clone uses a specific version of the VMware Player software. For best results, use only the VMware Player that is installed with v.Clone. Your v.Clone disk image is not guaranteed to work with other versions of VMware Player.

*Check the Iomega web site at www.iomega.com/support for a list of supported Iomega hard drives. The image below illustrates some of the currently supported Iomega hard drives.



What are the advantages of v.Clone?

Iomega v.Clone gives you the ultimate mobility to take your complete PC environment with you wherever you go and use on virtually any computer**.

- Access your primary computer's OS, apps, files, and personal settings from your Iomega external hard drive while it's connected to another computer
- Easily syncs between your clone and your primary computer
- Move seamlessly back and forth between a physical environment (home or office PC) and a virtual environment (Iomega hard drive connected to any PC*)
- Ideal for those with multiple computers (netbooks, laptops, or desktops – Windows PC only)
- Ultimate mobility solution – 'run' your PC just about anywhere – at home, at friends' and families' homes, at the office, at a remote office, or on the road
- Quick access to your PC in case of an emergency or if your primary computer ever crashes

**Requires a computer where you have administrator rights.



Copyright © 2010 Iomega Corporation. All rights reserved. Iomega, v.Clone, and the stylized "i" logo are registered trademarks of Iomega Corporation in the United States and/or other countries. EMC is a registered trademark of EMC corporation in the United States and/or other countries. Certain other product names, brand names, and company names may be trademarks or designations of their respective owners. 122809r12